



Debden AutoSOLO, Autotest and Production Car Autotest

Sunday 27th October 2024

Marshals Instructions

REMEMBER CLOCKS GO BACK AT 2am SUNDAY

Contents

Forward.....	2
Venue Location	2
Overall site plan	3
Entry to the venue.....	3
Timetable	3
Signing-on.....	4
Test Operation.....	4
Officials	5
Radio	5
Catering	5

Forward

I would like to thank everyone for coming out to help us on Round 6 of the AMSC Autosolo challenge and remind everyone that the primary concern for everyone should be to look after their own safety, then the safety of those around you and then the safety of competitors.

Venue Location

The venue is MOD Debden airfield.

Postcode: CB10 2YL

OS Grid Ref: TL 56678 34418

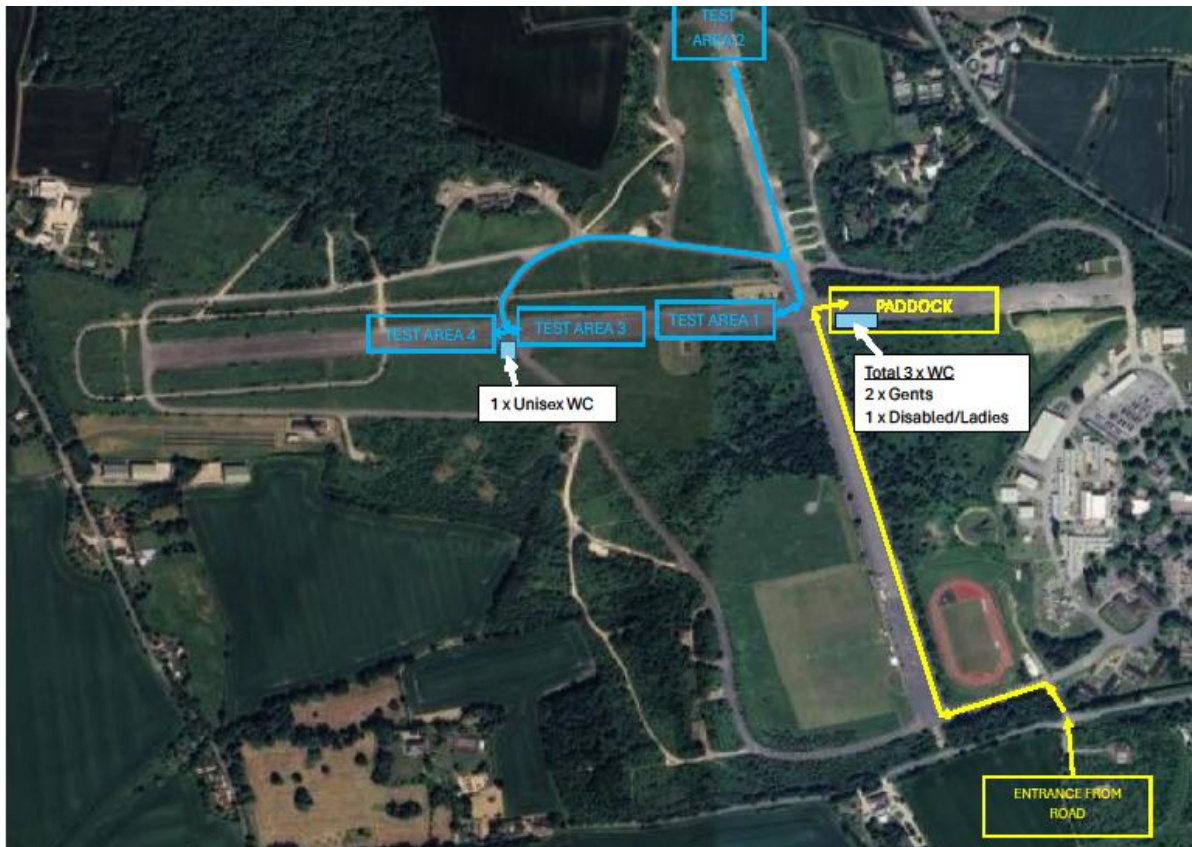
Latitude: 51°59'09.8"N (51.986168)

Longitude: 0°16'49.2"E (0.280371)

What3Words: Lecturers.rate.feast



Overall site plan



Entry to the venue

The entrance gate is shown on the above diagrams, it will be arrowed and is located approximately 100 yards west of the main barracks gate, **DO NOT** go into the main gate. Be prepared to show your entry pass to the marshal on the gate, either by printing it or displaying on your phone. Then follow the yellow line on the above plan and report to the Chief Marshal at the event HQ in the paddock.

Timetable

On Sunday 27th October the timetable will be:

- 07:45 Gates open
- 08.00 Scrutineering open
- 08:45 Access to venue closes
- 09.00 Marshals briefing
- 09.15 Drivers' briefing
- 09:30 First test starts

REMEMBER THAT THE CLOCKS GO BACK AT 2am ON SUNDAY 27th October.

As daylight hours will be reduced, we intend to hold two runs of each of four tests before a lunch break and then two more runs at each of four tests after lunch. The start and finish **WILL** be reversed in direction at lunch, note that the route is not necessarily a mirror image as all 360 degree 'spin' turns round a single cone will remain in a clockwise direction in accordance with MSUK recommendations.

We will advise on the day when the lunch break starts and ends as the exact timing will depend on event progress.

Signing-on

You will have signed on when you completed the marshal registration form on-line, so there is no requirement to sign on again if you did complete this. There will be paper forms available for anyone unable to complete the online registration/signing on.

Upon your arrival, please park in the paddock then walk to the Chief Marshal, Dave Saint, to check in and collect your allocation details and a food voucher, as a small token of our appreciation. This will be adjacent to the Green Belt MC office. There will be marshal packs for the test start crews which will include test diagrams, check sheets & running order and diagrams and check sheets to distribute to the Test observers.

Please ensure that you have with you:

Pens/pencils, clipboards, hi-viz tabard. Please wear appropriate clothing for the prevailing conditions – there is little wind protection so do be mindful of this. We always recommend stout footwear.

Test Operation

- The Tests will be timed by hand-held stop watches.
- Competitors will have timecards to be filled in by the Timing marshals. Enter the time in seconds and tenths, just ignore any hundredths on the clock – do not round up.
- The Timing marshals will also keep a check sheet, matching the entries on the timecards. Two check sheets (sheet A and sheet B) will be provided for each run of the test so where there are two timing marshals, each can keep their own check sheet.
- The Test Observer will have a check sheet and should notify the Timing marshals, by radio or agreed method, of any penalty observed so it can be entered on the competitor's timecard.
- Timing starts when the car's front wheel crosses the start line.
- Timing stops when the car's front wheel crosses the finish line.
- The car must stop before the baulk line, crossing this line incurs a 'LINE' fault.
- Striking a cone incurs a 'CONE' penalty. Striking a cone means moving it from its original position.
- A Wrong Test (WT) is when the competitor deviates from the correct route, however if they make a mistake but subsequently retrace their step and go the correct way then that is OK and no WT penalty is incurred.

Competitors will be split into groups, each group will start their run at a different test number so be careful to fill in the correct line on the timecard, it will not necessarily be the first free row.

When you are at the first test being visited by a competitor on their run, please ensure they present the correct timecard for that run – the run number is in the top right corner.

Officials

John Davie	Clerk of the Course	07894 642854
Chris Deal	Secretary of the Meeting	07920 840689
Dave Saint	Chief Marshal	07783 981605
Richard Candy	Scrutineer	
Stuart Kingham	Event Steward	07710 040918
Hilary Warne	Safeguarding Officer	07951 971377
Richard Warne		07958 632082
Dan Pearson	First Aider	07791 844000

Motorsport UK & MoD Liaison Officer – Brian Hemmings

Venue Liaison – Pete Walters

Radio

There will be radios used on the event. These will be on the Open ‘colour’ channels licenced for use with Ofcom by GBMC. These will be located as follows and will be on the following channels.

AREA	LOCATION	OPEN CHANNEL	Common Radio Channel Number
Test Area 1	Start/Finish and in Test	Red (86.3750)	Channel 5
Test Area 2	Start/Finish and in Test	Blue (86.3625)	Channel 6
Test Area 3	Start/Finish and in Test	Orange (86.3500)	Channel 7
Test Area 4	Start/Finish and in Test	Green (86.3375)	Channel 8
Clerk of the Course/Secretary/Chief Marshal/Event HQ		Yellow (77.6875)	Channel 9

In case of an incident that requires attention from outside the Test, initially contact the CoC or Chief marshal by switching to Channel 9.

In the event that this is not picked up directly it should be directed to the HQ who will pass on the message.

Use of the mobile phone is an alternative option.

If the issue is safety or incident related ensure that this is highlighted at the commencement of the message.

If you do not have your own radio, then the Chief Marshal will have hand-held sets available when you check in with him.

Catering

JD’s will be onsite until just after lunch, please patronise them.

There will be portaloos provided.

Finally – Please have an enjoyable safe event.

PLEASE NOTE THERE IS NO ELECTRIC OR WATER ON SITE. PLEASE BRING WITH YOU ANY WATER YOU MAY REQUIRE DURING THE DAY WITH YOU